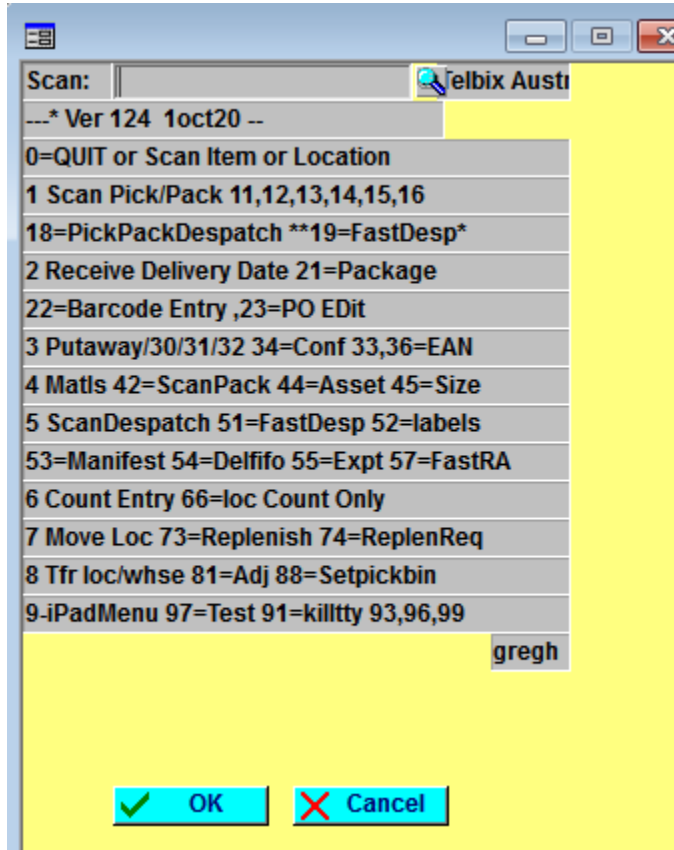


a9rfmenu – the Warehouse RF Stock Functions on Tablet or RFGun.

The Main Screen. Ver 124 12oct2018



To setup a RF user and RFworkstation

1. create a user in Linux and Pronto
 - a. a security level of 5 operator level with default task cus/a9rfmenu.

```
74:5:N:cus/rfmenu:unit 74:0:M:::0::  
72:5:N:cus/rfmenu:rf72:1:M:::48::  
73:5:N:cus/rfmenu:Handheld:0:M:::48::
```

2. edit the default home folder .profile

```

PROTERM=ansi; export PROTERM
TERM=ansi; export TERM
LABELS=zebral;export LABELS
TERMINFO=$PRONTO/terminfo; export TERMINFO
STARTRACK=/mnt/datawarehouse/STARTRACK3;export STARTRACK
if [ "$0" = "-sh" -o "$0" = "-ksh" -o "$0" = "-" -o "$0" = "-su" ]
then
    umask 002
    trap "" 2 3
    cd $DATADIR
    pronto
#    pronto cus/a9rfmenu -ipad
    exit
fi

```

c.

OR

the preferred is to edit the \$PRONTO/lib/prontodefaults.env file

```

if [ "$USER" = "gregg" ] ; then
    DIRECTFREIGHT=/tmp;export DIRECTFREIGHT
    STARTRACK=/shares/prontoshare/STAR;export STARTRACK
    DIRECTFREIGHT=/shares/prontoshare/DIRECT;export DIRECTFREIGHT
    unset INVOICES
    unset PICKING
    IPRINTSET=0;export IPRINTSET
fi
# End of Script "prontodefault.env"

```

OR in a multicompny environment the \$PRONTO/lbin/XXX.env file

```


if [ "$USER" = "timh" ] ; then
    PICK=ho3-tfn;export PICK
    #INVOICES=ho3-inv;export INVOICES
fi
# warehouse users are different
if [ "$USER" = "christianh" ] ; then
    DIRECTFREIGHT=/shares/prontoshare/DIRECT1;export DIRECTFREIGHT
    STARTRACK=/shares/prontoshare/STAR;export STARTRACK
    STARPRINT=LP2;export STARPRINT
    INVOICES=ho5-tfn;export INVOICES
    DEL_DOCKET=ho5-tfn;export DEL_DOCKET
    #IPRINTSET=1;export IPRINTSET
fi
if [ "$USER" = "danielw" ] ; then

```

Command 9 starts the Ipad Touch screen Version



Command 0 exits the program at any time. And forces a fresh login.
 A scanned location or product or GTIN14 display's product and location data.

CAN:					
Code:30-4004				Methven Au	
HERMUDA HI RISE SHOWER					
CHROME					
QOH:	3376	Pk:	12	A	N05A
05A	24MAR17		208		
11F	04JAN17		576		
01G	04JAN17		1152		
10C	22MAR17		240		
16E	22MAR17		480		
23B	22MAR17		240		
37E	22MAR17		480		

Command 1 displays the full standard scan Pick Pack RF Menu

SCAN:

Code: Methven Au

10 Pick Order

11 Scanpack Pick

12 Scanpack Pack

13 Pick and Pack

14 UnPack

15 rePrint Labels

16 rePrint Invoice

17 ScanPack Despatch

19 ScanPack and Despatch

---* Ver 100 19SEP2016 --

Loc:

Command 10 start the ScanPick Entry

Process Sales Order Picking

OrderNo:

And waits for scan of a PICK Job Number (12 chars)

Command 11 and 12 and 13 are only available in an advanced Type 2 or 3 warehouse

Command 17 Calls the Standard old dispatch process (Terminal only)

Command 18 Executes the Warehouse pick and pack process.

Process Sales Order Picking

OrderNo:

1 Orders

1462764 1

upto 20 orders can be scanned or

Picking Sales Order 0000100001

Locn: G41A 28

Stock: AOHSCPWHAU

AIO AURAJET HANDSET

WHITE F/P CP BOXED

CONFIRM ITEM BY SCAN

Scan:

WHITE F/P CP BOXED

2Pick: 1 Pkd: 0

Scan: AO

More to Pick

*** Wrong Item **

Until

PRONTO-Xi

Item Picked

OK

Then Confirm Despatch and Carrier Code


Pick Complete

Despatch:

Carrier:

Fast/Scan Despatch

Picking Slip No:

Fully Delivered: 

Command 19 Calls the Fast Despatch scanpack mode directly without ScanPick

And if fully picked confirm carrier code

And enter final carrier configuration in Cartons and Pallets with optional cubic details.

nce (*.spl)

ams/pronto/

Pick Complete

Despatch:

Carrier:

***METHVEN TEST

FREIGHT Details

Carrier: Service: EXPRESS ROAD

	Qty	Weight	H	D	W
Item 1:	<input type="text" value="0"/>	<input type="text" value="0.0"/>	<input type="text" value="0"/>	<input type="text" value="0"/>	<input type="text" value="0"/>

Package Type

	Kg	CM	CM	CM	Cubic M3	
	Weight	H	D	W		
n 1:	<input type="text" value="1"/> <input type="text" value="P1"/> PAL EXP	<input type="text" value="300.0"/>	<input type="text" value="60"/>	<input type="text" value="120"/>	<input type="text" value="120"/>	<input type="text" value="0.864"/>
n 2:						
n 3:						
n 4:						

The Suburb , State and POSTCODE MUST BE VALID else they must be entered
If this is NOT a Pickup
delivery.

Receivers Name:

Address 1:

Address 2:

Address 3:

Suburb:

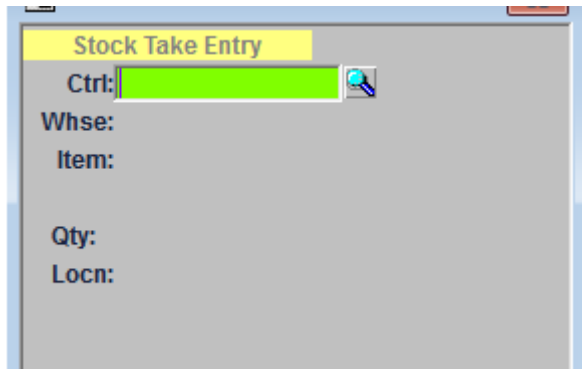
State: CtryCd: Post:

Deliver Label Message:

Deliver Label Message:

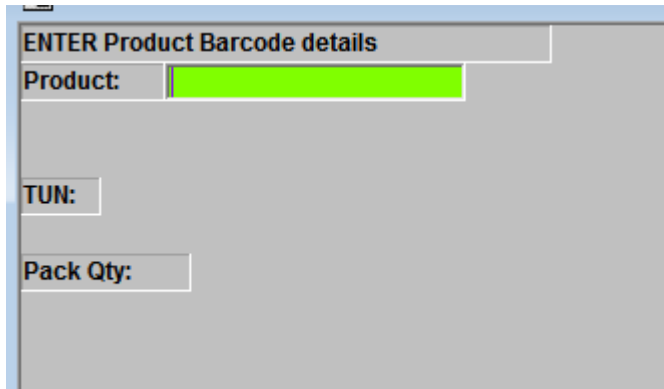
Deliver Label Message:

Command 6 is used for stock entry



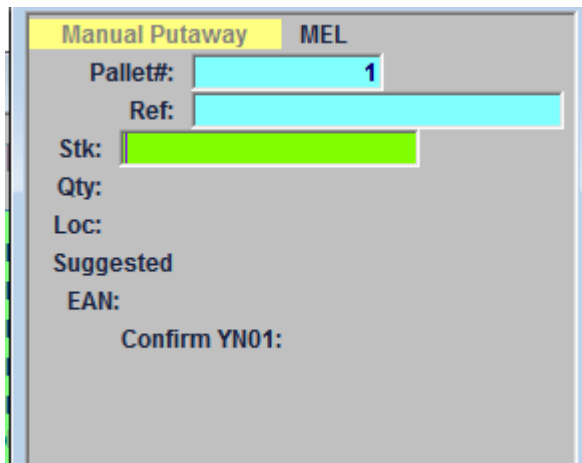
A screenshot of a software window titled "Stock Take Entry". The window has a yellow header bar with the title. Below the header, there are several input fields: "Ctrl:" with a green highlight and a magnifying glass icon, "Whse:", "Item:", "Qty:", and "Locn:". The background of the window is grey.

Command 22



A screenshot of a software window titled "ENTER Product Barcode details". The window has a grey background. There are three input fields: "Product:" with a green highlight, "TUN:", and "Pack Qty:". The "Product:" field is the largest and is positioned at the top.

Command 3 or 30



A screenshot of a software window titled "Manual Putaway" with a yellow header bar. The header bar also contains the text "MEL". Below the header, there are several input fields: "Pallet#:" with a cyan highlight and the number "1", "Ref:" with a cyan highlight, "Stk:" with a green highlight, "Qty:", "Loc:", "Suggested", "EAN:", and "Confirm YN01:". The background of the window is grey.

Command 45

ENTER Product Size details

Item: **30-4004**

BERMUDA HI RISE SHOWER

WARNING Version 27NOV LWH cms

EACH Barcode:	9313045304004
EACH Length(cm):	44.0
EACH Width(cm):	13.0
EACH Height(cm):	8.0
EACH Weight-kg:	0.520
INNR Items/Ctn:	12
INNR Length(cm):	44.0
INNR Width(cm):	13.0
INNR Height(cm):	8.0
INNR Weight-kg:	0.520
INNR Barcode:	29313045304008
OUTR Length:	58.0
OUTR Width(cms):	46.5
OUTR Height:	18.0
OUTR Weight-kg:	6.200
OUTR Items/Ctn:	5
OUTR Barcode:	19313045304001
Items/Pit:	9999

Command 7

Stock Transfer **MEL**

Stk:

From

PLT#:


Qty:

To

Confirm (Y/O)?

Command 73 perform pick face replenishment

Replenish Pick face

Stk: 

From

PLT#:

Qty:

To

Confirm (Y/O)?

Command 74 perform next replenishment.

Maintain Replenishments

Standard

stockcode ▾	Qty	Locn ▾	
			⌵
			⬆
			⬆
			⬆
			⬆
			⬆
			⬆
			⬆
			⬆
			⬆
			⬆
			⬆

Find **1Sel** **2Del** **0Quit** **3Pick**

Command 88

ENTER Product Pick Bin

Product :

Pick Bin :

Items/Ctn:

TUN :


Command 8 whse Transfer

Stock Transfer		MEL
Stk:		
From		
PLT#:		
Qty:		
ToWhse:	To	
Confirm (Y/0)?		

Comand 90

WMS RF	
1	Pick
2	Receipt
3	Putaway
4	Replenish
5	Inv. Transfer
6	Stocktake Counts
7	Warehouse Change
0	Exit

9 Iphone/iPad Mode



****METHVEN TEST**

Stock Enquiry

Pick_Despatch

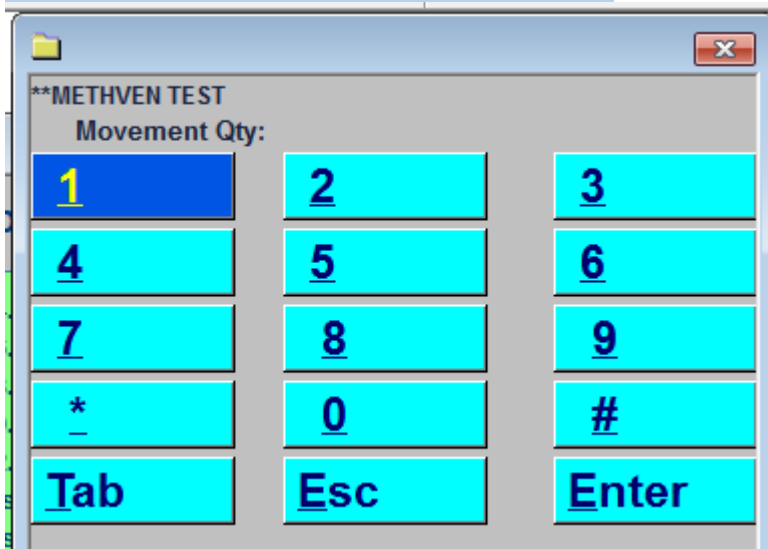
Recieve_Putaway

Move_Replen

StockTake

Scan

Key



****METHVEN TEST**

Movement Qty:

<u>1</u>	<u>2</u>	<u>3</u>
<u>4</u>	<u>5</u>	<u>6</u>
<u>7</u>	<u>8</u>	<u>9</u>
<u>*</u>	<u>0</u>	<u>#</u>
<u>T</u> ab	<u>E</u> sc	<u>E</u> nter

.end of a9rfmenu as at 12oct2018