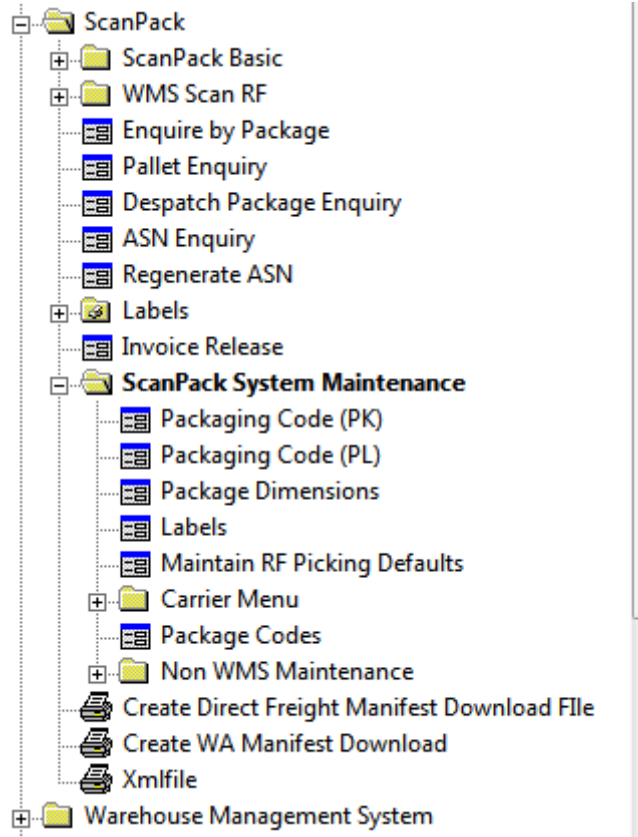
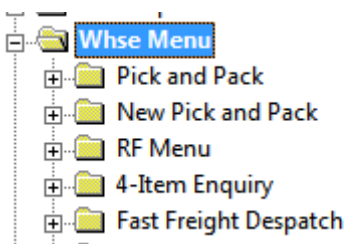


The scanpack process serves many purposes but primarily to verify picked items and to track how they are packed for despatch. The full process produces a unique SSCC label per package (Carton or Pallet) and tracks the details via EDI to destination. In non advanced warehouses the Fast ScanPack Despatch function is more efficient. The RF command 18 allows additional functions in efficiently pick and verifying locations and multiple product identifications including Serial and Lot Tracking.

The Standard Menu



The warehouse quick menu



The Scanpack Control Screen is Critical

Maintain RF Picking Defaults

Warehouse/User Defaults

Warehouse: *ALL
Picker/Packer: *all ALL USERS ALL WAREHOUSES

Must Scan Warehouse Locations: N
Must Scan SSCC Printer: N
Manually Select Shortages: N
Show Notes Before Picking: N
Maximum Package Weight: 0.0000

Use Prenumbered Totes: N
Allow Multiple Open Boxes (*): N
(*) Only applicable if using prenumbered totes.

Special Functions Allowed

Own Box: Y
Unpack Item: Y
Skip Item: N

Close Box: Y
Review Lines: Y
Location Enq:

Shortage: Y
Transfer Item: N
Reallocation: N

Special Stock: Y
Review Header: Y
Consolidate: N
Verify Box:

System/Warehouse Defaults

Warehouse Content Label:
Pack Method: T
Fwd Orders - Same Shipment: N
Print Docket: N

Release Required: N
Allow Multiple Orders: N
Shipment Format: O
Allow Overshipment: N

Find Entry Correct Remove

NB the max package weight should be zero if warnings are not required.
The Max Pallet weight is currently set to 300kg.