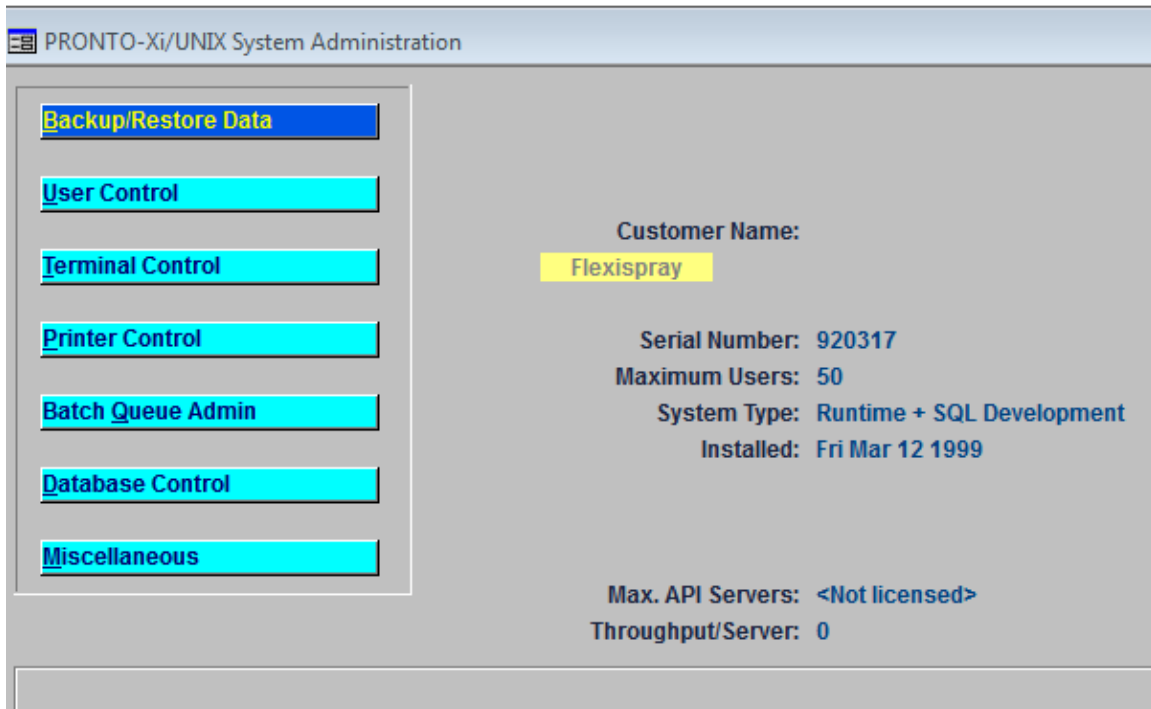


A0proadmin – Pronto Administration ver 670 works in 730 also

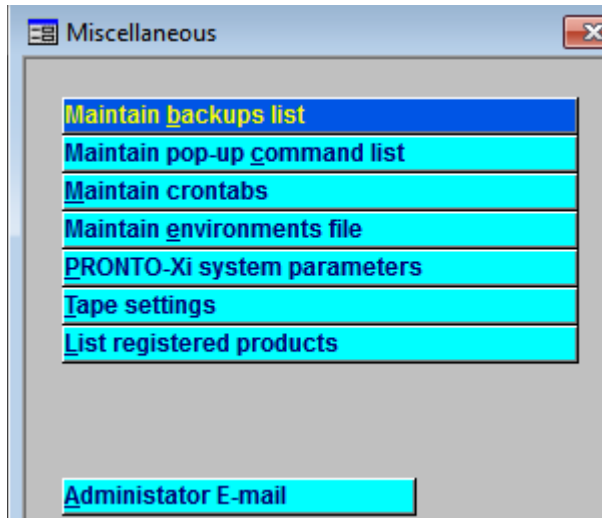


This is the primary tool to maintain a working pronto system on Linux.

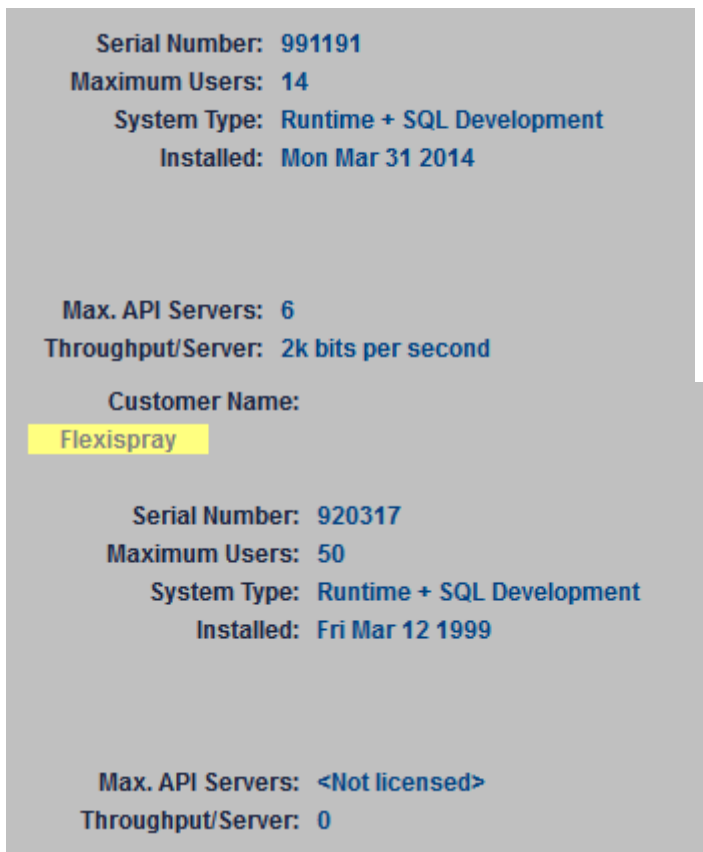
1. Backup/Restore menu - a selection of sub-functions to backup or restore Data.
2. User Control Menu provides the easiest method of adding a Linux user and subsequently as a pronto user (see a8admin) also override passwords.
3. Terminal Control – not normally used if system is setup correctly except for kill a terminal session if it hangs or exits un-expectedly
4. Printer Control (a useful adjunct to CUPS) to view print jobs and cancel prints. And review and maintain the printers definition table.
5. Batch Queue Admin – overall basic stop, start and view whats in queues.
6. Database Control- this menu is mainly essential in an IDS database to monitor. space usage. A dataspace usage of greater that 85% demands attention.
7. Miscellaneous Menu – to Maintain the system environments .
  - i.maintain the list of backup commands
  - ii.maintain the <F3> shortcut commands
  - iii.review and edit the cron task list (root perms reqd)
  - iv.edit the primary environments setup file
  - v.review and NOT change the overall parameters.
  - vi.define a tape backup device
  - vii.view the system modules licensed (numbers only)
  - viii. maintain the admin user email address . This user receives IDS fatal alerts

and 3 command sthat re not in the menu butshouldbe.

The Miscellaneous menu.



This program also displays the company name and serial no details



The Following command are not in the menu but should be.

1. To Kill a bad or zombie session ( zombie is where the task is no longer linked to pts device so that the system can kill it off.

Some systems have the scripts killme

It asks for a user name then send a kill signal to terminate all tasks that user is running

2. If its not available use prowlo to identify the pts/999 device numbers then

Either by itself

ttykill

Or as

ttykill pts/13 pts/14 pts/61

3.another form is ps -efl | grep username | more

Can speed up the process

3. the 2 bugs are that it doesn't recognize cups and calls the old cancel lp command

Use /usr/sbin/cupsenable lpname

4. to examine the print queue use

lpstat -tlmore

5. to cancel a print file from the shell use

.cancel lp-filenno where lp-filenno as listed in lpstat on its last screen.

5.to terminate all sessions

Prokillall

This command be needed to run 3 or more time on busy systems.

.end 25oct2017